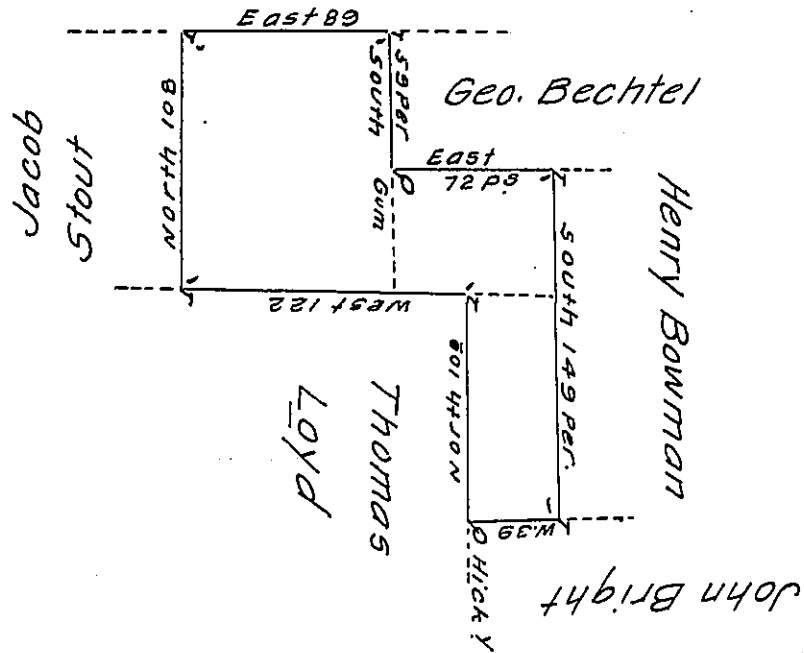


Mannor Line



In Pursuance of a Verbal Order from the Hon.^{ble} Thomas Penn Esq^r Surveyed the 29th Day of December 1738 to John Landis the above described Tract of Land being part of the Mannor of Richland Situate in the County of Bucks. Containing 100^a & ~~perches~~ with Allowance of Six # C^t

Nich^o Scull. —

a.w.

IN TESTIMONY that the above is a copy of the original remaining on file in the Department of Internal Affairs of Pennsylvania, made conformably to an Act of Assembly approved the 16th day of February, 1833, I have hereunto set my Hand and caused the Seal of said Department to be affixed at Harrisburg, this thirteenth day of June 1910.

Henry Hoover
Secretary of Internal Affairs.